

INSTALLING COMPSCORE3 ON A NEW PC

Here are the steps to install Compscore3 onto a new PC.

STEP 1 – INSTALL THE EVALUATION

Download the Compscore3 Evaluation from the web site http://www.altosoft.com.au/cs3eval_new.asp and run the installation as normal. We recommend using the default folder of c:\Compscore3. There's no need to run the newly installed program yet.

STEP 2 – COPY THE ENTIRE COMPSCORE3 FOLDER FROM THE OLD PC

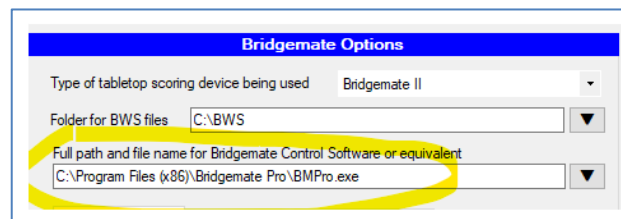
Copy everything in and under the C:\Compscore3 folder to the same location on the new PC. This will bring across your entire database of sessions and players (usually Compscore3.mdb), as well as your templates, user preferences, licence and other details.

EXTRA STEP FOR BRIDGEMATE USERS

You will also need to install the Bridgemate Control Software (BCS) to your new PC.

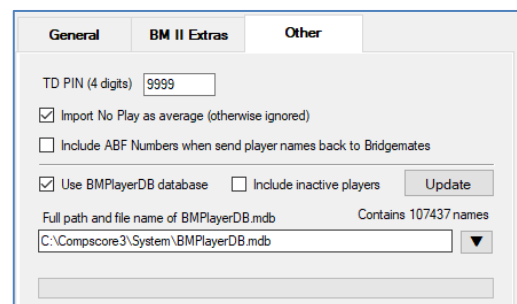
Download this from <https://support.bridgemate.com/en/support/solutions/folders/44001197553> and follow the prompts. This will install the program and necessary drivers. **Warning - do not connect the Bridgemate sever until this step has been run.**

Once the BCS is installed, you will need to check that it is linked to Compscore3 correctly, so that the player names that show on the Bridgemates are coming from an up-to-date Players file. There are two parts to this in Compscore3:



Under **Setup | Bridgemate Options**, check the path to the BCS. Even if you've copied all the files from the old PC, this setting may not be correct as the newly installed BCS may be in a different folder.

On the same Bridgemate Options page, under Other, check that the location of the BMPlayerDB.mdb database is as expected. If the current Compscore3 setting is at odds with the BCS setting, a red label appears, showing where the BCS expects the file to be. You can either change the Compscore3 setting to what the BCS expects or change this setting in the BCS. Either is okay, but you may need to run the Update step (as pictured) if the file you link to has no or outdated data.



WHAT IF THE OLD PC IS UNAVAILABLE?

If you don't have access to the old PC, perhaps through a disk crash or theft of the old PC, install the evaluation per Step 1 above, and launch the program once installed.

You will be prompted to enter your licence details – if you are unsure of your licence number, contact Altosoft. Once done, the program will be fully licenced.

You should then download the latest Compscore3 program as the evaluation version may not be the latest build. Do this from <http://www.altosoft.com.au/cs3latestbuild.asp>, or from the option under the File menu.

You will also need to check your various preferences and options (via the Setup menu).

REMINDER ABOUT COMSPCORE3 LICENCING

The Compscore3 licence allows the following:

For Clubs – Compscore3 can be installed on any computers that are used to score club sessions, or that are used for training and learning purposes by club members.

For Tournament Directors – Compscore3 can be installed on any computer/s used by the director to score sessions / events that they are directing.